



61 Tower Building Water Street, Liverpool, L3 1BH

Offers Over £120,000

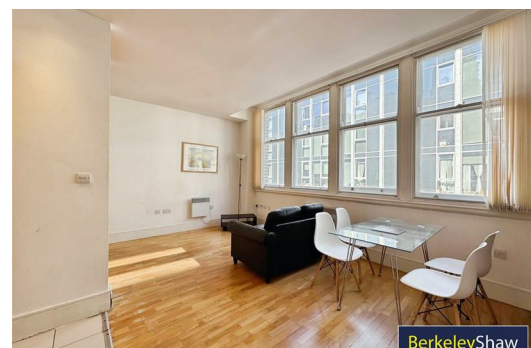
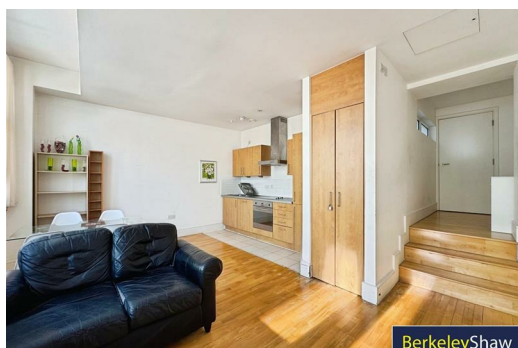
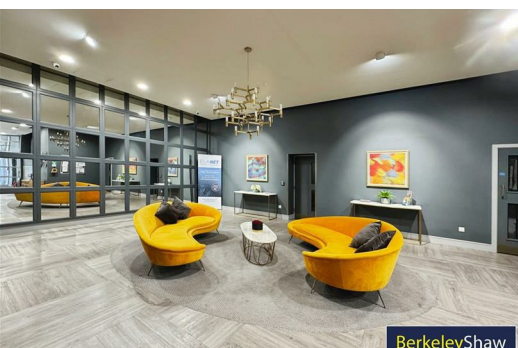
Welcome to this spacious one-bedroom apartment, ideally positioned on the 5th floor of the iconic Tower Building on Water Street – right in the heart of Liverpool's city centre.

This charming Grade II Listed building is rich in character, and the apartment itself showcases elegant features such as high ceilings and impressive sash windows, flooding the space with natural light and enhancing the sense of space.

Upon entering, you are welcomed by a generous hallway leading to a bright and airy open-plan kitchen diner/living area—ideal for both relaxing and entertaining. The kitchen is fitted with integrated appliances, including a full-sized fridge freezer and dishwasher, offering both practicality and modern style.

The spacious double bedroom offers a peaceful retreat, while a well-appointed bathroom adds further comfort. Additional benefits include a secure entry system, a 24-hour concierge service, providing added security and convenience.

With no onward chain, the apartment is ideal for anybody looking for a straight forward purchase. This superb apartment is perfect for professionals, first-time buyers, or those seeking a stylish city centre base.



Communal entrance hall

Secure entry system with concierge service, both lift & stairs access.

Entrance hall

Electric heater & intercom entry system.

Open plan kitchen diner/living space

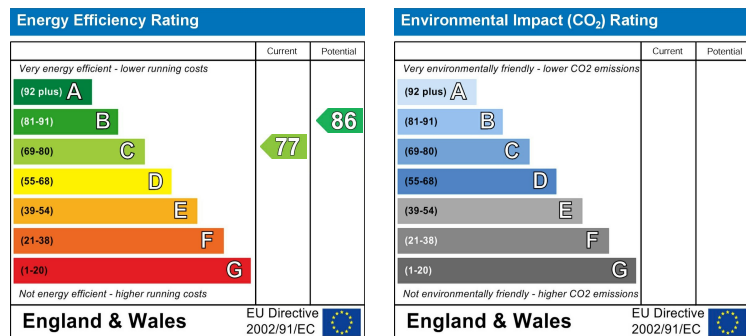
Laminate floor, sash windows, 2 x electric heaters, spotlights, electric oven, electric hob, extractor hood, integrated dishwasher, integrated fridge freezer, stainless steel sink with drainer & utility cupboard.

Bedroom

Sash window, electric heater, storage cupboard & fitted wardrobe.

Bathroom

WC, basin, tiled floor, tiled walls & heated towel rail.



BerkeleyShaw



BerkeleyShaw



BerkeleyShaw



Berkeley Shaw Estate Agents Limited.
Company No. 0784754

Berkeley Shaw Real Estate Limited.
Company No. 05206927

